

ULSTER WOOL INTAKE DATA

Data up to the end of September 2024

HEADLINES

As at the end of September 2024 the volume of wool received by Ulster Wool from members in Northern Ireland was down by 14% year on year. This amounts to a shortfall of 139 tonnes.

Given that on average a fleece weights 2.25kg this is equivalent to 61,000 fewer ewes having been shorn in Northern Ireland this year versus last year.

Wool is still being collected and it is likely that the reduction in breeding ewes in NI is larger than this.

- Farmers reducing the number of animals they are carrying. On average clip weights in NI are down by 8% year on year.
- Sheep farmers are also exiting the industry.

In order to maintain the viability of wool collection and grading in Northern Ireland Ulster Wool is now handling some fleeces from sheep in the Republic of Ireland.

Figure 1: Year to date intake by UK region versus prior year – Source Ulster Wool

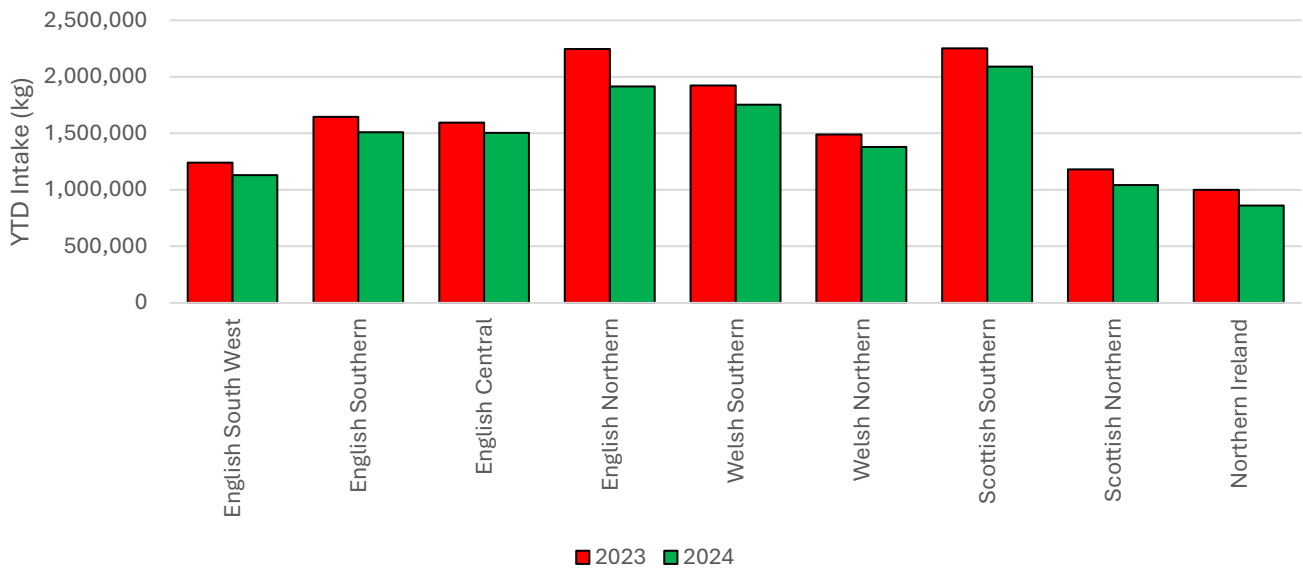
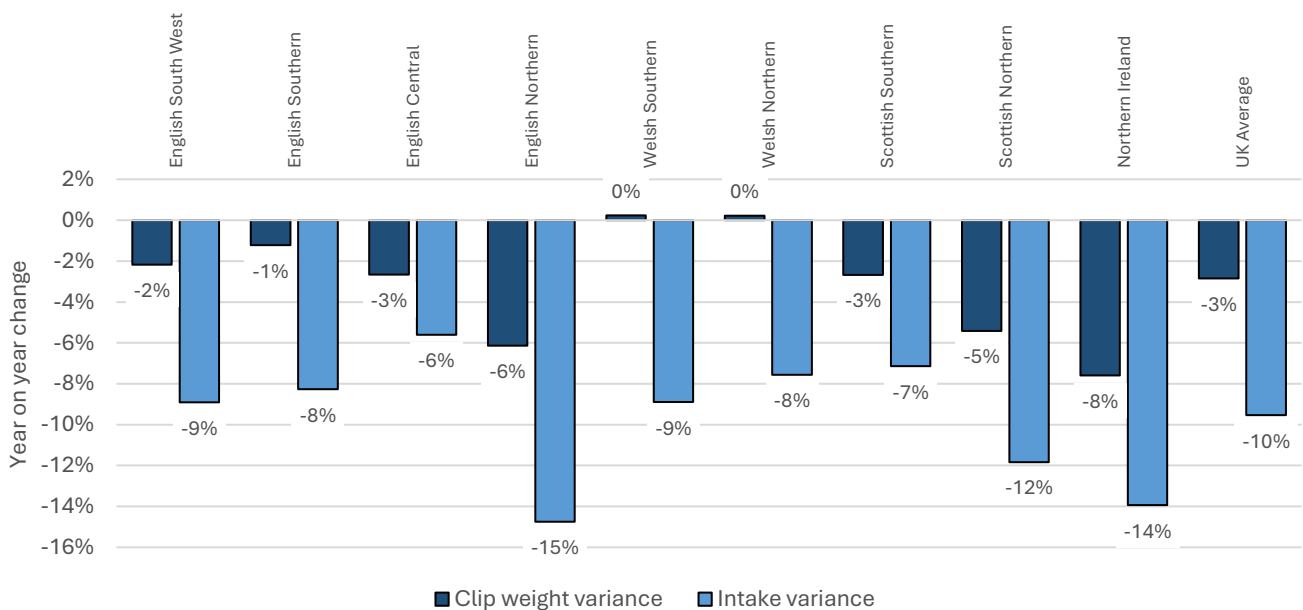


Figure 2: Intake variance versus clip weight variance by region



ULSTER WOOL INTAKE TRENDS

Ulster Wool's intake in Northern Ireland is 139 tonnes behind last year which is equivalent to a 14% decline y-o-y.

Figure 3: Weekly intake

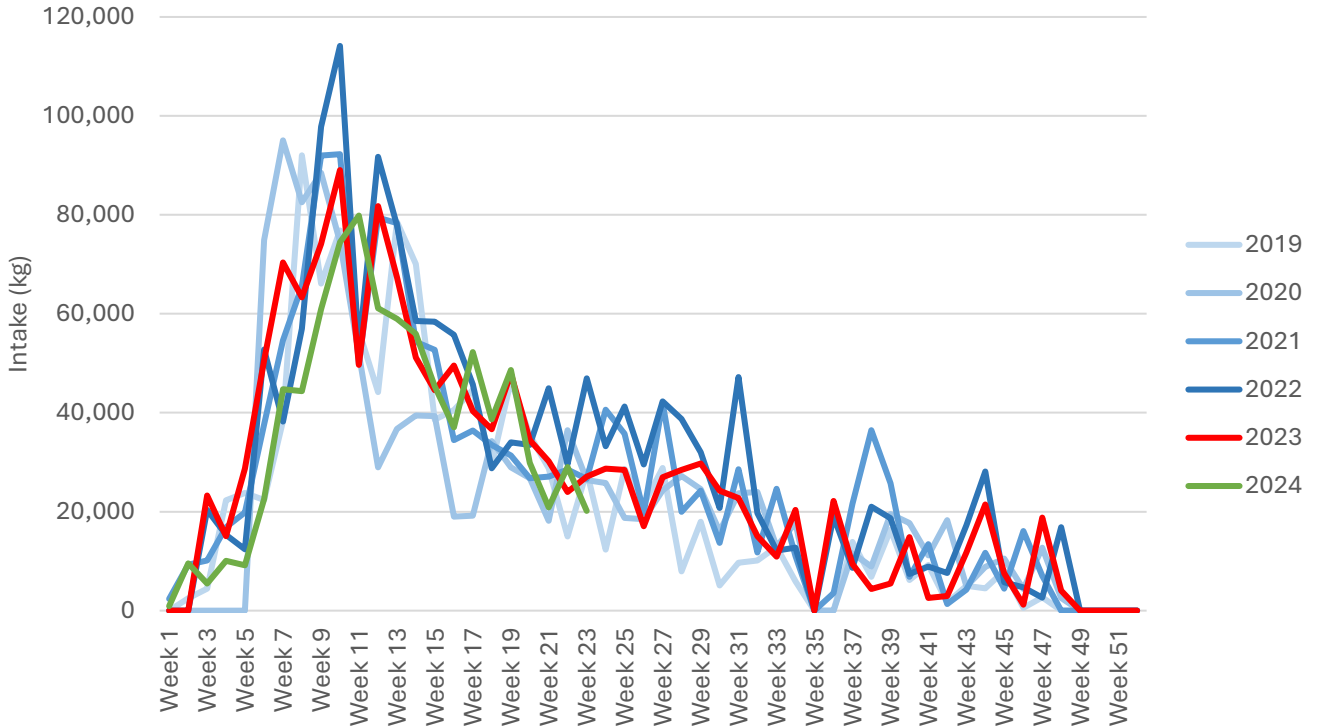


Figure 4: Cumulative intake

