

Carbon & Natural Capital

www.scottishwoodlands.co.uk



Carbon sequestration and management of natural capital assets forms an ever-growing part of our business. Scottish Woodlands Ltd manages a large portfolio of carbon projects.



Growing a Sustainable Future

Scottish Woodlands Ltd manages a portfolio of over 200 carbon projects predicted to sequester 2.5 million tonnes of carbon dioxide equivalent.

Scottish Woodlands' carbon team are involved in a variety of carbon projects from new woodland creation and peatland restoration schemes.

The climate crisis is a global threat and as we rapidly accelerate towards Net Zero by 2050, climate change mitigation and decarbonisation are at forefront of UK Government, public and private sector objectives.

The UK Committee on Climate Change issued a report in January 2020 outlining that land use transformation is required to ensure critical ecosystem services are preserved and land becomes a more effective carbon sink. The report recommended planting 30,000ha of woodlands per year and restoring at least 50% of upland peat and 25% of lowland peat by 2050.

The biological growth of trees absorbs carbon, via photosynthesis, and woodlands have high rates of carbon sequestration. Similarly, peatland is a super carbon sink. The hydrology of peatland, in its natural waterlogged state,

prevents carbon within organic matter at the surface oxidising and being released as carbon dioxide.

Adding financial value to these natural assets has given rise to the voluntary carbon market. Corporate entities and businesses can now voluntarily offset their UK based carbon emissions by purchasing Woodland Carbon Units and Peatland Carbon Units from verified woodland and peatland carbon projects or offset verified carbon units against their own business emissions.

The Scottish Woodlands carbon team are experienced project developers for the UK Land Carbon Registry which is the platform for Woodland Carbon Code and Peatland Code.

Working closely with colleagues across the company, we can offer a comprehensive range of services from project implementation, new woodland creation design, forest establishment, peatland restoration, and planting through to long-term peatland and forest management and timber harvesting.

Creating New Woodlands

- Planning and Design
- Grant Approval
- Full Project Implementation
- Management
- Aftercare and Maintenance
- Woodland Fire Insurance





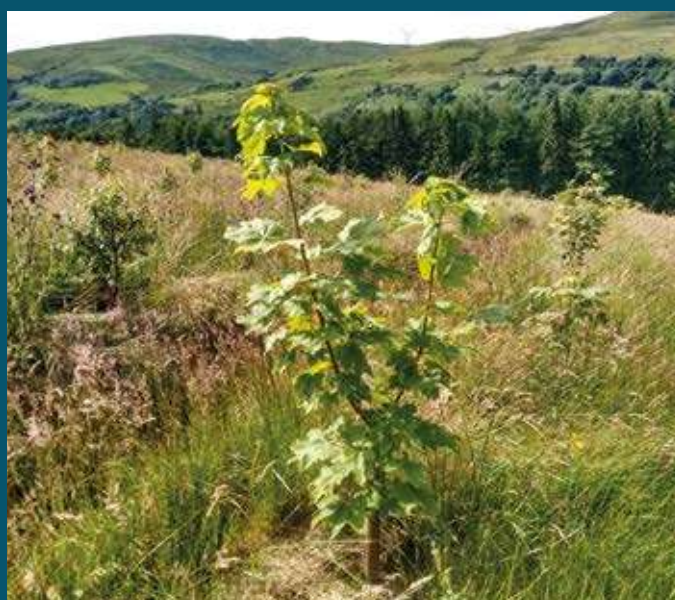
Managing Existing Woodland

- Maintenance
- Fertilising
- Drainage
- Respacing
- Thinning
- Continuous Cover Management
- Forest Certification



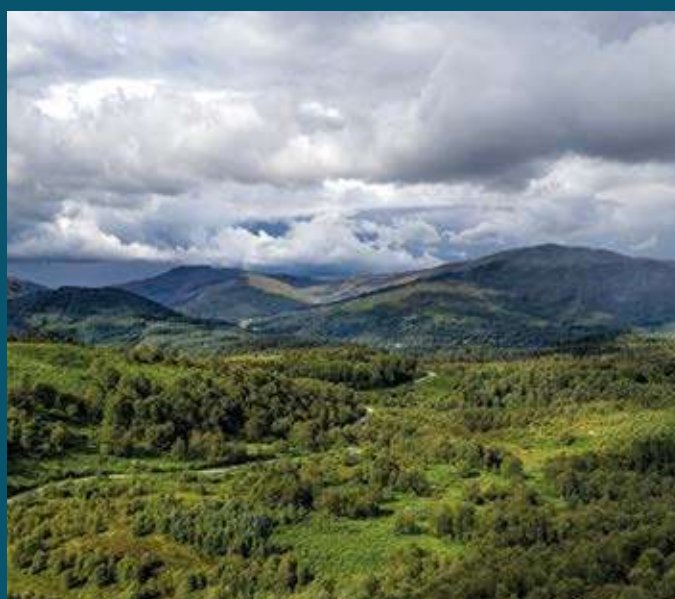
Woodland Carbon Code

- Site Assessment and Project Scope
- Full Project Implementation and Management
- Registration
- Validation
- Verification
- Woodland Carbon Guarantee Scheme
- Case study Reports
- Advisory service



Natural Capital Investment and Acquisitions

- Market Analysis and Review
- Site Sourcing
- Site Assessment and Inspection
- Investment Appraisal
- Valuation
- Technical Reporting
- Purchase and Sale Due Diligence
- Portfolio Management





Peatland Code

- Site Assessment and Project Scope
- Full Project Implementation
- Management
- Registration
- Validation
- Verification
- Grant Funding Applications



Carbon Services

- Site assessment
- Woodland carbon projects
- Peatland carbon projects
- Registration, Validation and Verification
- Carbon unit sales



Please contact us for further information:



Head Office:

Research Park, Riccarton,
Edinburgh EH14 4AP
T: 0131 451 5154
E: enquiries@scottishwoodlands.co.uk

Carbon Services:

Emma Kerr
Carbon Manager
M: 07384 818301
E: emma.kerr@scottishwoodlands.co.uk